

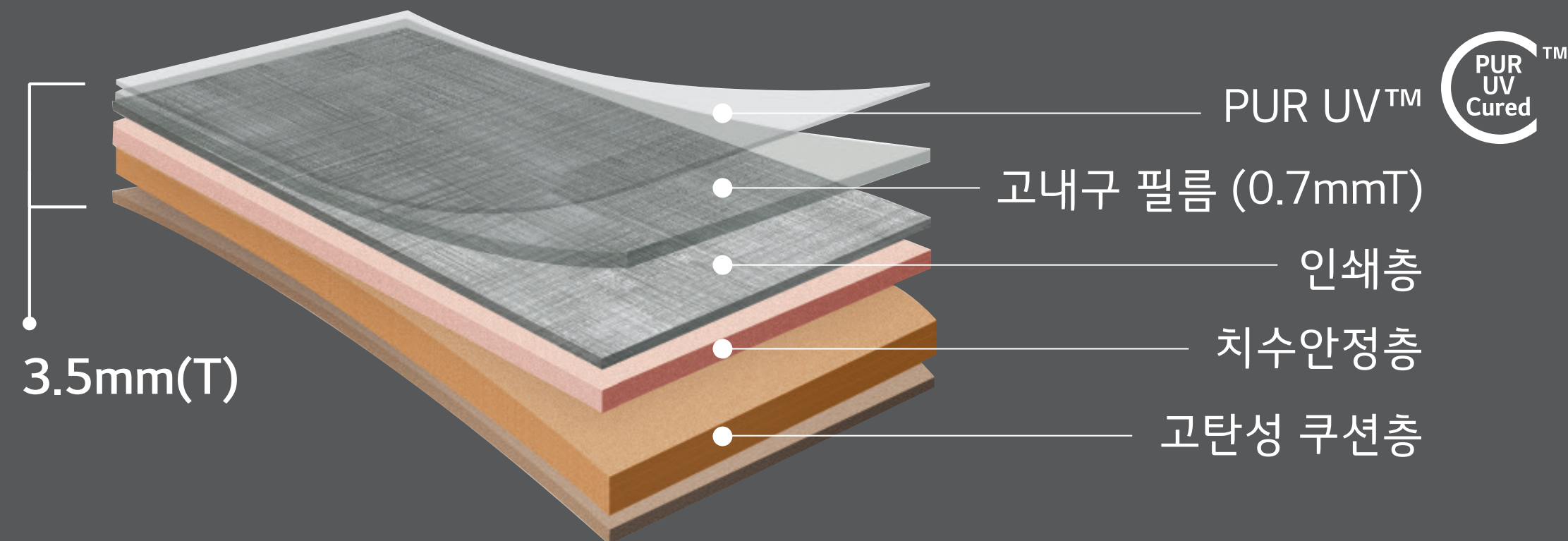
컴포트 COMFORT

COMFORT 3.5T 기능성 비닐시트



20dB

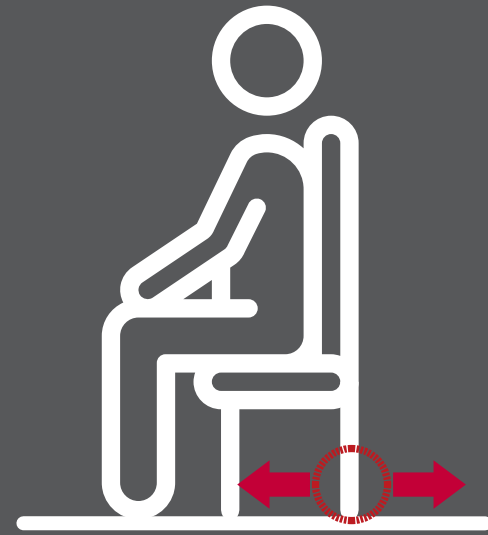
« LX만의 최적화된 공법으로
뛰어난 경량 충격음 저감 효과 :
△20dB (EN ISO 10140) »



COMFORT 3.5T 기능성 비닐시트

눌림방지

: 고내구 Film, 고탄성 쿠션층 적용으로 눌림방지 우수



잔류압입량
≤0.2mm (EN433)

미끄럼방지

: 유럽기준 R10 등급 확보



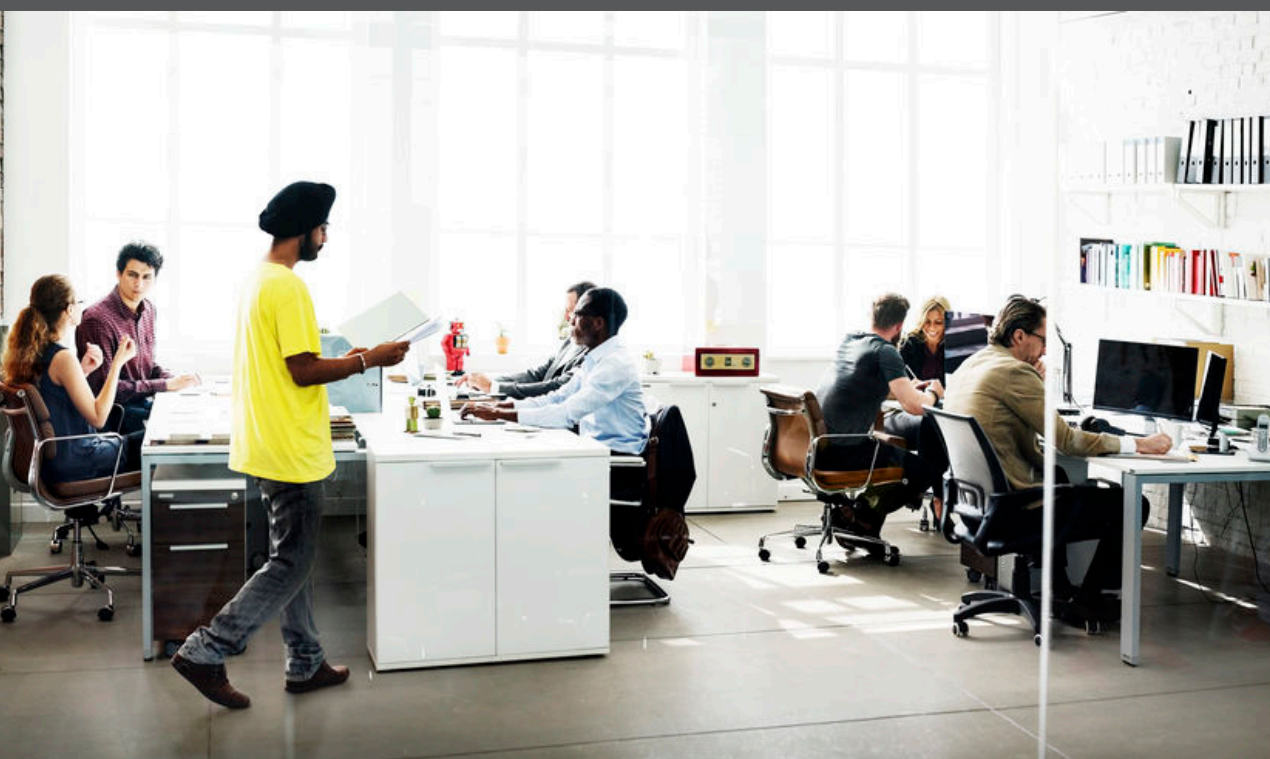
Ramp Test **R10**
(DIN51130)

난연성능

: 유럽기준 바닥재 최고등급 확보



Reaction to Fire **Bfl-s1**
(EN13501-1)



COMFORT

INDEX

Alphabet



CF 28105-02



CF 28102-02



CF 28117-02



CF 28113-02



CF 28114-02

« Linen



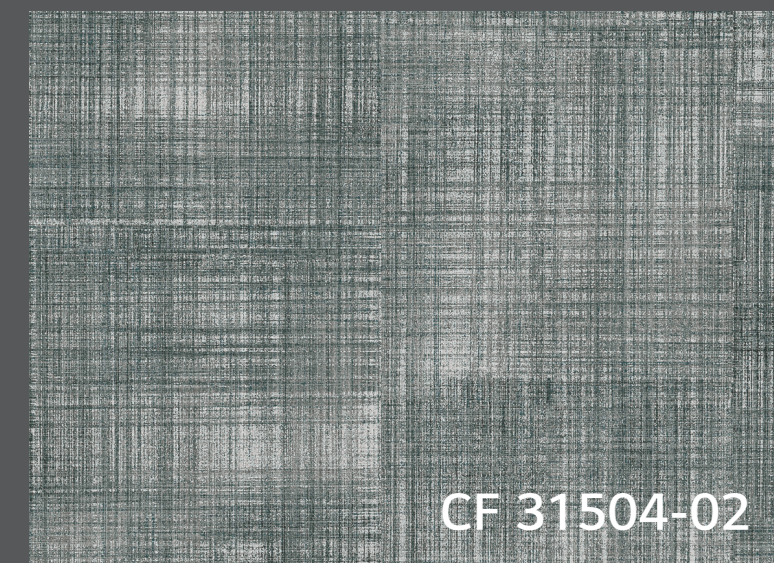
CF 31507-02



CF 31511-02



CF 31503-02



CF 31504-02

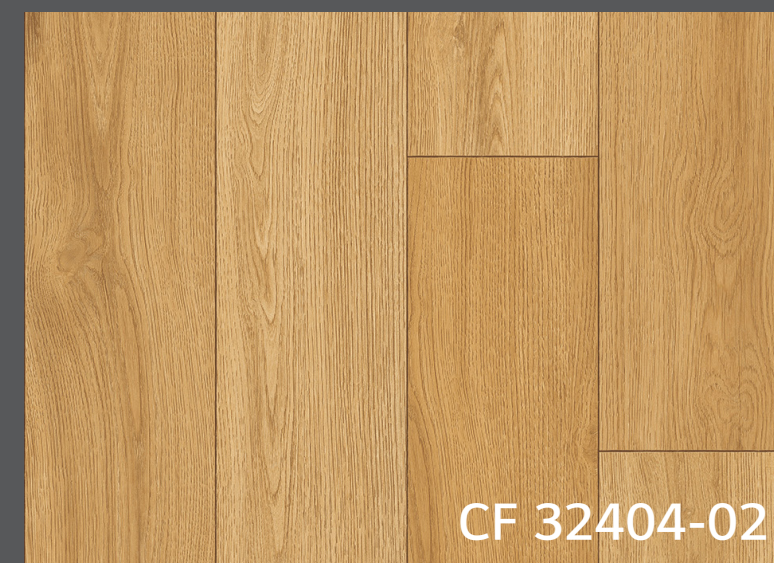


CF 31515-02

Wood



CF 32402-02



CF 32404-02



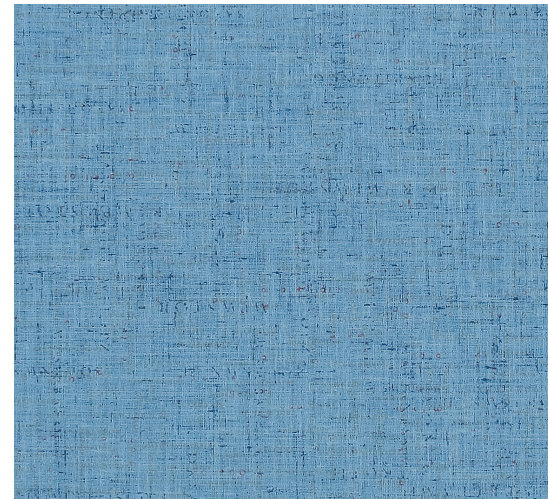
 **COMFORT**



CF28105-02
WEL8105-01
Sand Beige



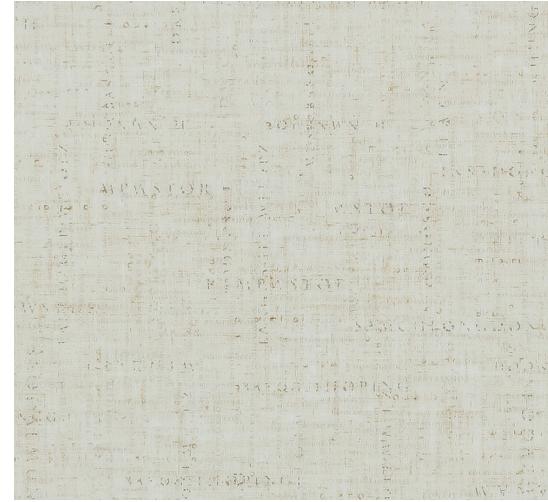
CF28102-02
WEL8102-01
Cloud Grey



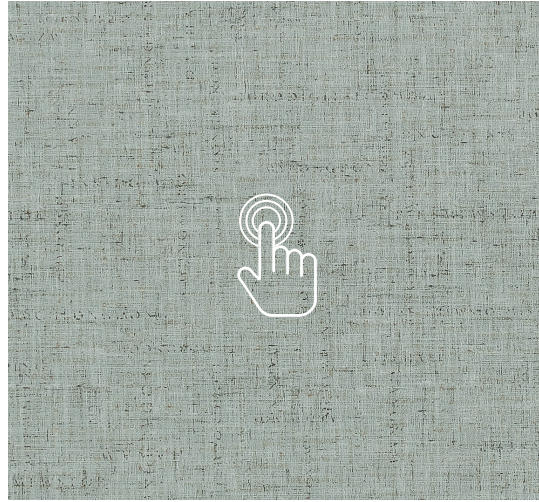
CF28117-02
WEL8117-01
Cadet Blue



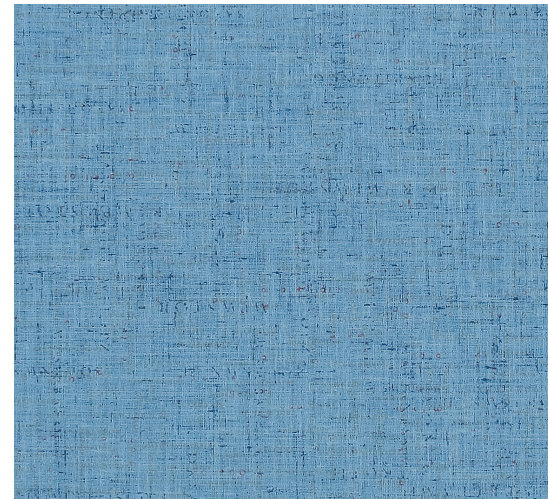
 **COMFORT**



CF28105-02
WEL8105-01
Sand Beige



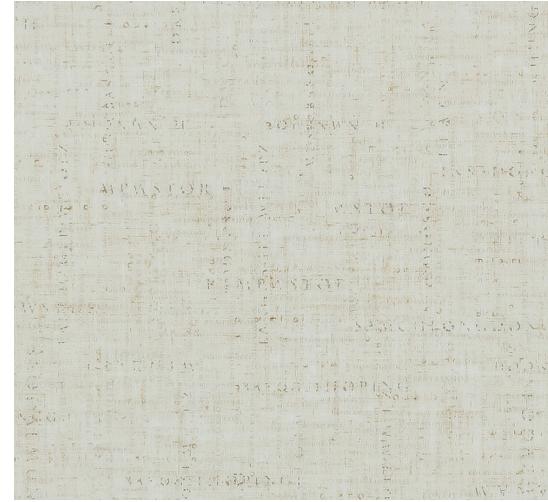
CF28102-02
WEL8102-01
Cloud Grey



CF28117-02
WEL8117-01
Cadet Blue



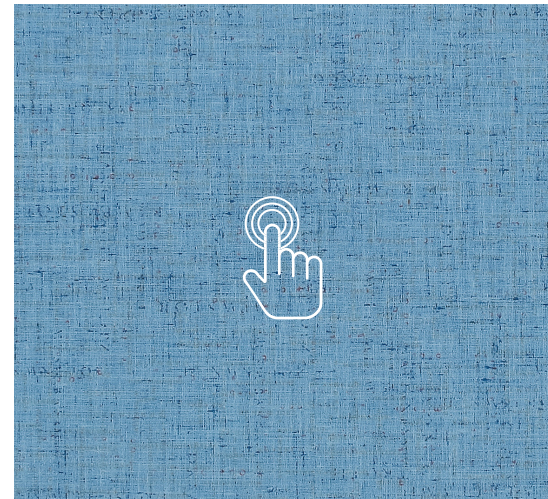
 **COMFORT**



CF28105-02
WEL8105-01
Sand Beige



CF28102-02
WEL8102-01
Cloud Grey



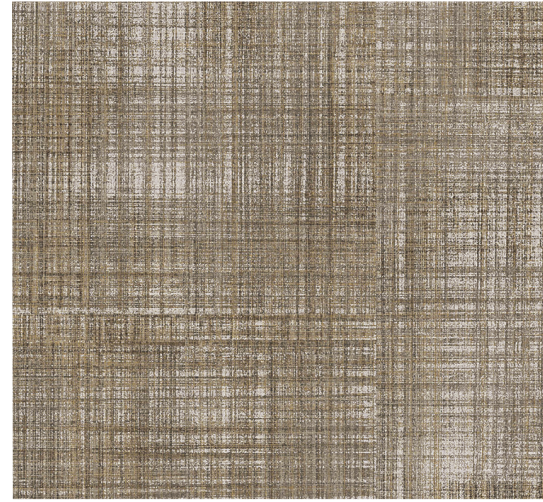
CF28117-02
WEL8117-01
Cadet Blue



 **COMFORT**



CF31507-02
WEL2503-01
Spiced Almond



CF31511-02
WEL2505-01
Burnt Umber



CF28113-02
Dandelion Yellow

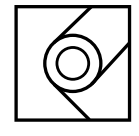


CF28114-02
Poppy Orange



CF31515-02
Seaform Green

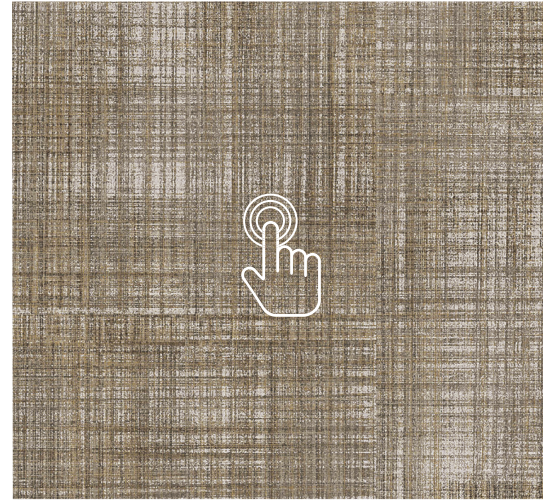




COMFORT



CF31507-02
WEL2503-01
Spiced Almond



CF31511-02
WEL2505-01
Burnt Umber



CF28113-02
Dandelion Yellow



CF28114-02
Poppy Orange



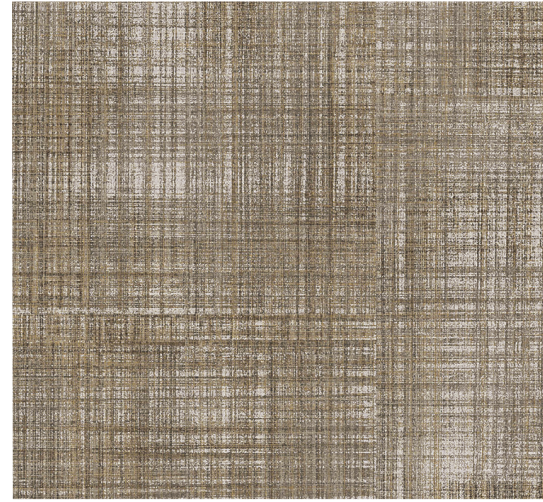
CF31515-02
Seaform Green



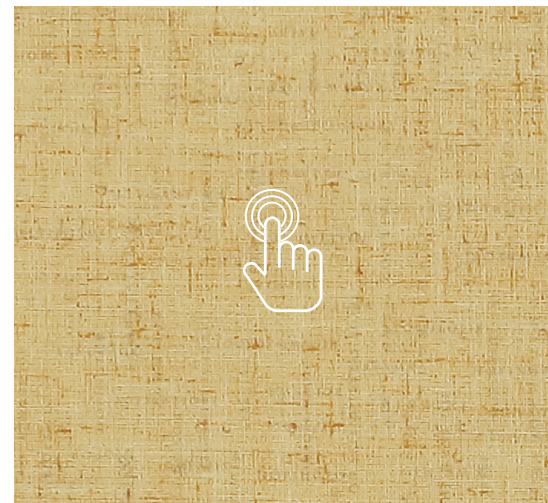
 **COMFORT**



CF31507-02
WEL2503-01
Spiced Almond



CF31511-02
WEL2505-01
Burnt Umber



CF28113-02
Dandelion Yellow



CF28114-02
Poppy Orange



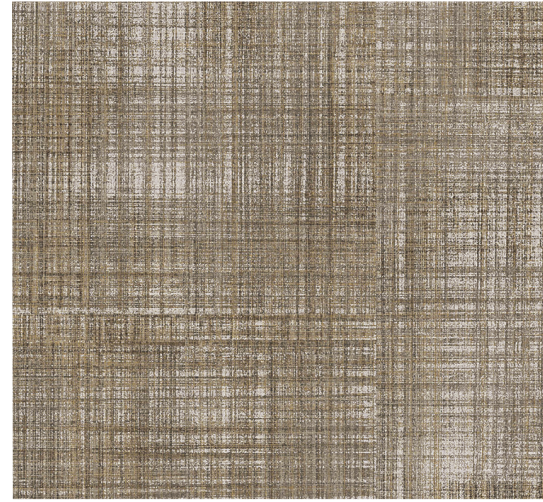
CF31515-02
Seaform Green



 **COMFORT**



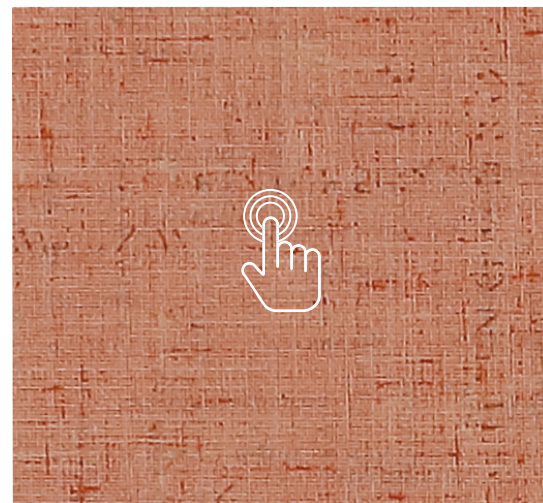
CF31507-02
WEL2503-01
Spiced Almond



CF31511-02
WEL2505-01
Burnt Umber



CF28113-02
Dandelion Yellow

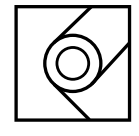


CF28114-02
Poppy Orange



CF31515-02
Seaform Green

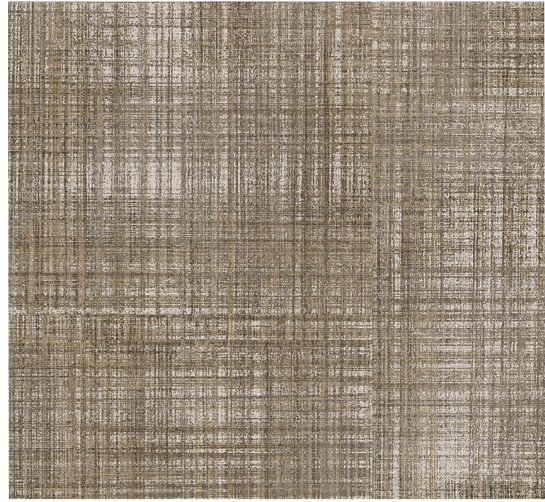




COMFORT



CF31507-02
WEL2503-01
Spiced Almond



CF31511-02
WEL2505-01
Burnt Umber



CF28113-02
Dandelion Yellow



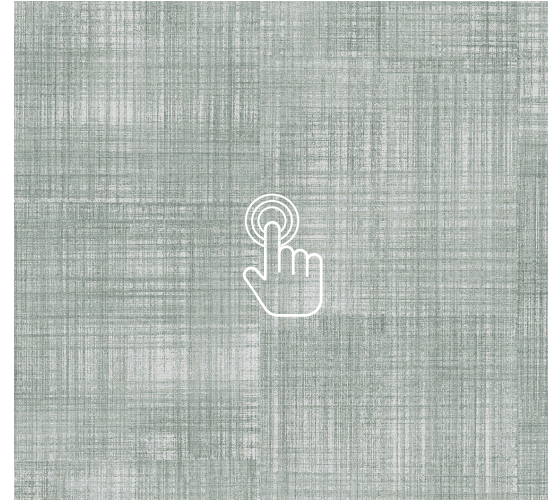
CF28114-02
Poppy Orange



CF31515-02
Seaform Green



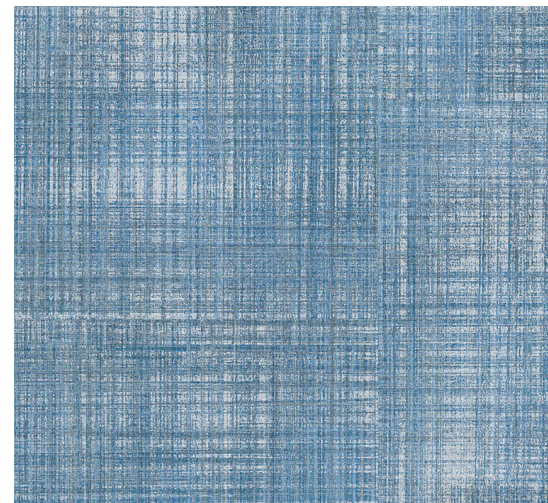
 **COMFORT**



CF31503-02
WEL2012-03
Meadow Grey



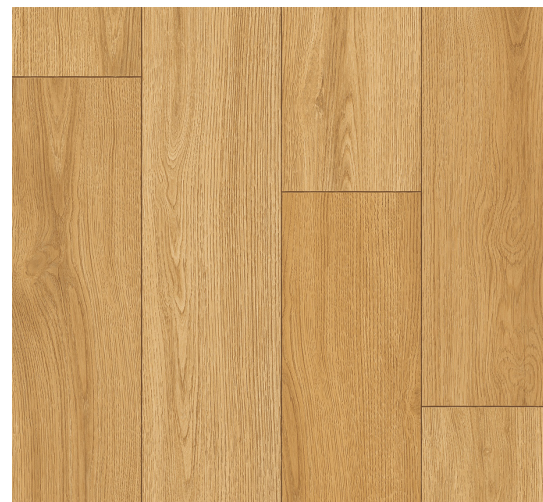
CF31511-02
WEL2505-01
Burnt Umber



CF31513-02
WEL5009-01
Lake Blue



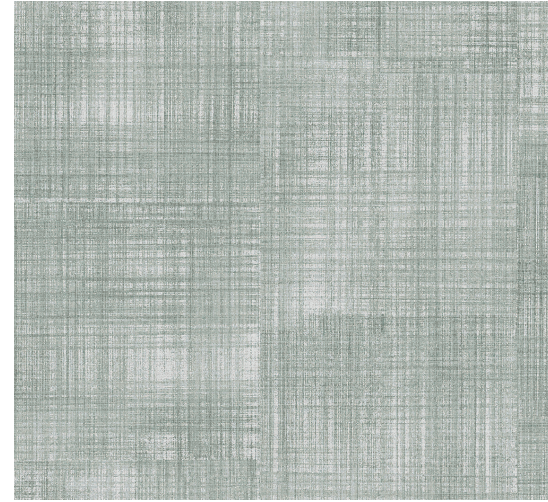
CF32402-02
WEL8002-01
Warm Camel



CF32404-02
WE93402-01
Golden Sesame



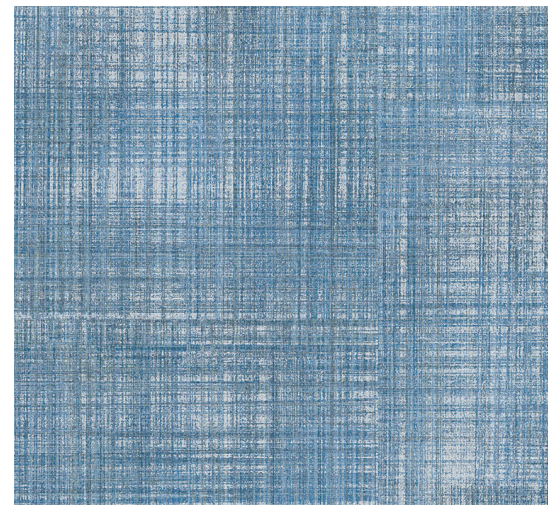
 **COMFORT**



CF31503-02
WEL2012-03
Meadow Grey



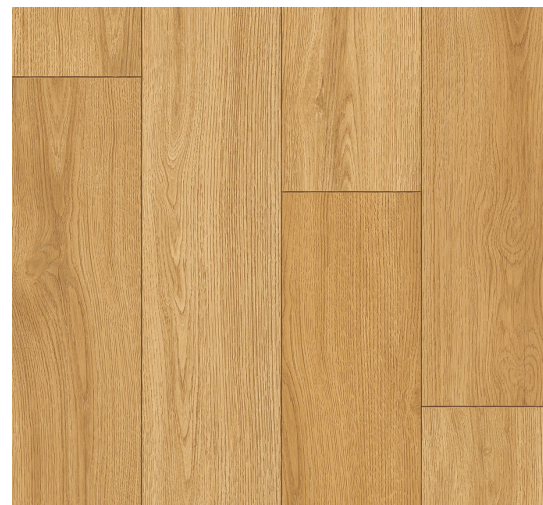
CF31511-02
WEL2505-01
Burnt Umber



CF31513-02
WEL5009-01
Lake Blue



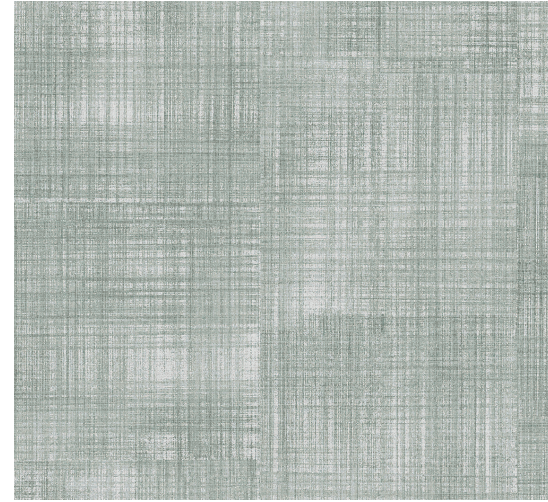
CF32402-02
WEL8002-01
Warm Camel



CF32404-02
WE93402-01
Golden Sesame



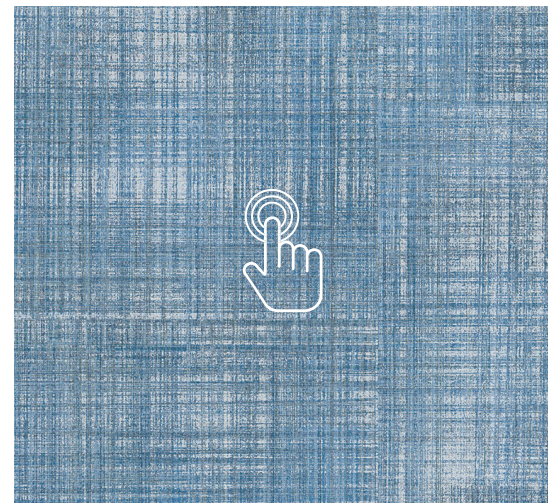
 **COMFORT**



CF31503-02
WEL2012-03
Meadow Grey



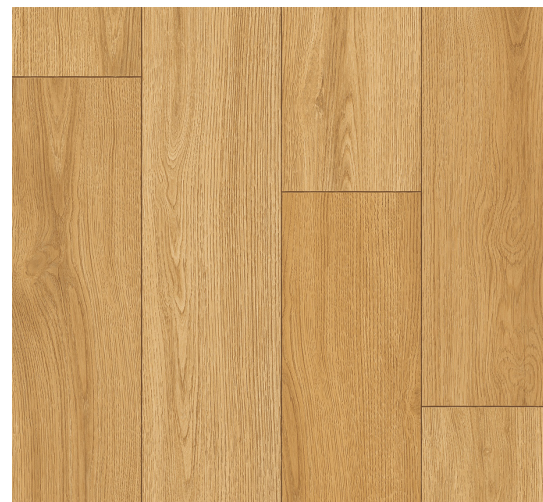
CF31511-02
WEL2505-01
Burnt Umber



CF31513-02
WEL5009-01
Lake Blue



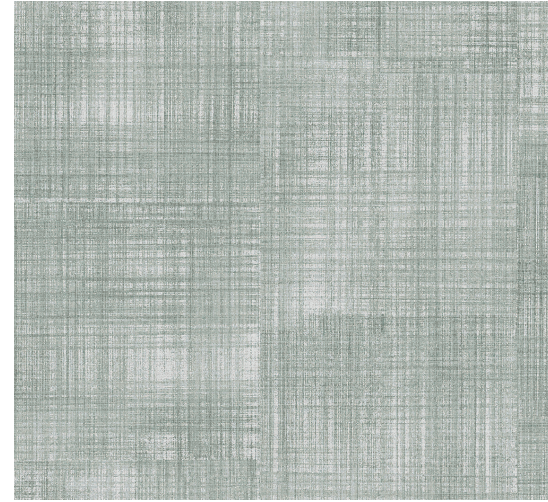
CF32402-02
WEL8002-01
Warm Camel



CF32404-02
WE93402-01
Golden Sesame



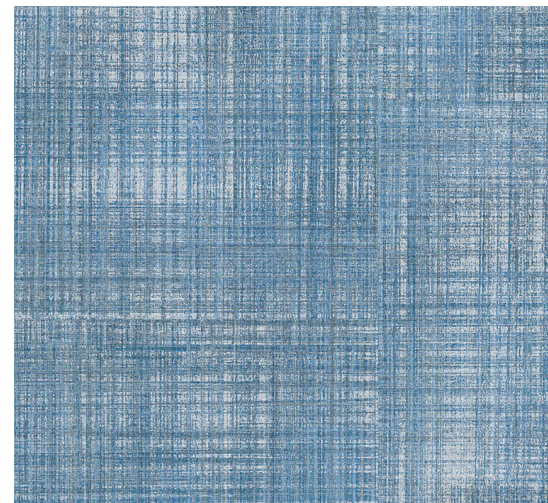
 **COMFORT**



CF31503-02
WEL2012-03
Meadow Grey



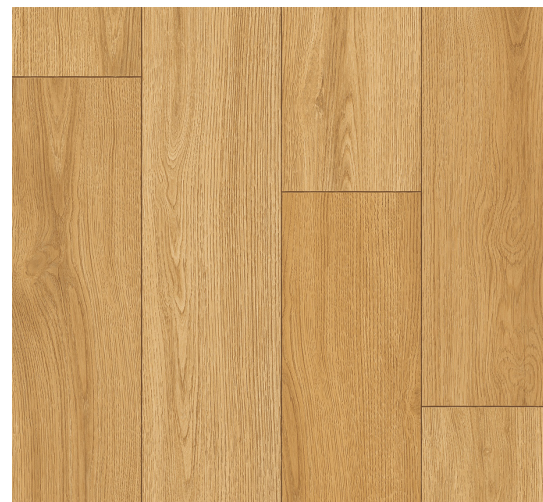
CF31511-02
WEL2505-01
Burnt Umber



CF31513-02
WEL5009-01
Lake Blue



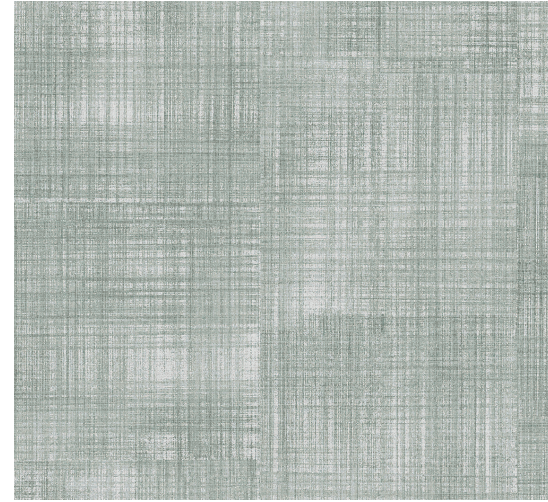
CF32402-02
WEL8002-01
Warm Camel



CF32404-02
WE93402-01
Golden Sesame



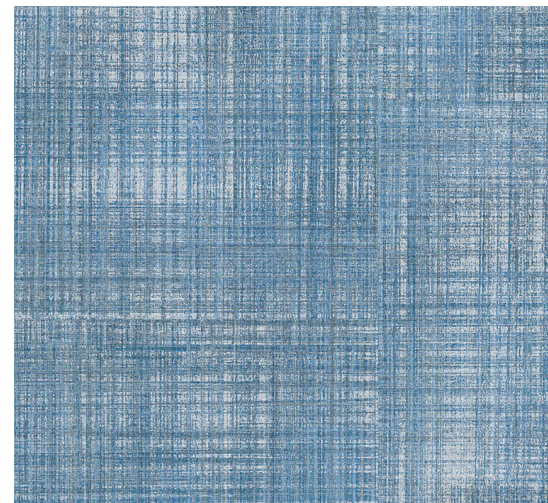
 **COMFORT**



CF31503-02
WEL2012-03
Meadow Grey



CF31511-02
WEL2505-01
Burnt Umber



CF31513-02
WEL5009-01
Lake Blue



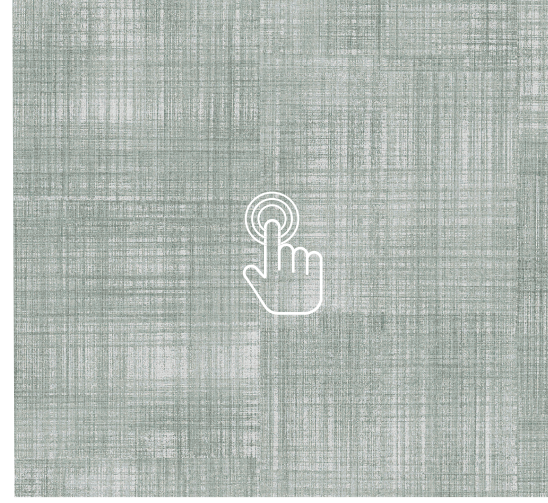
CF32402-02
WEL8002-01
Warm Camel



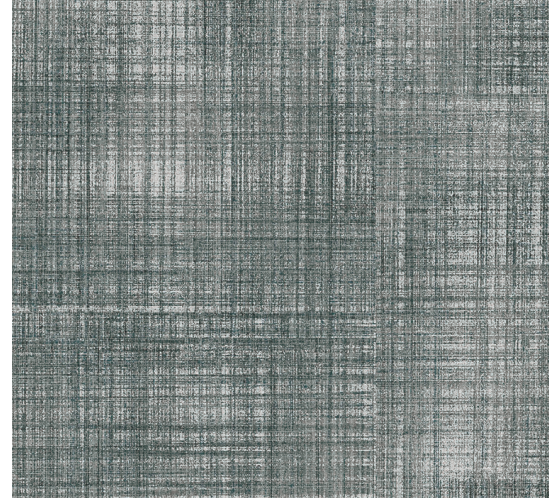
CF32404-02
WE93402-01
Golden Sesame



 **COMFORT**

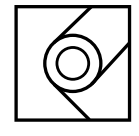


CF31503-02
WEL2012-03
Meadow Grey



CF31504-02
WELSD07-01
Charcoal Grey

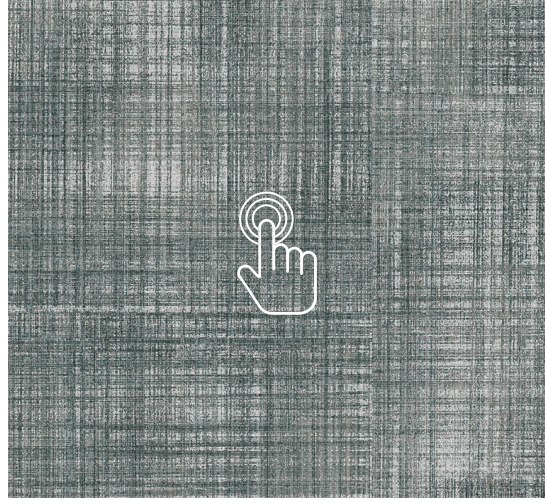




COMFORT



CF31503-02
WEL2012-03
Meadow Grey



CF31504-02
WELSD07-01
Charcoal Grey



COMFORT

Type of Flooring	Heterogeneous acoustic sheet		
Total thickness	3.5mm	Wear Layer	0.7mm
Width	2M	Length	20M/Roll
Weight	2,950 g/m ²	Colors	12 C



TECHNICAL DATA

시험방법	시험항목	단위	시험기준	시험결과	합부판정	
KS M 3802:2022	잔류압입율(B법)	%	20 이하	4.0	합격	
	압입량(23°C)	mm	0.3 이상	0.77	"	
	가열에 의한 길이 변화율(FS)	길이	%	2.0 이하	0.14	"
		나비	%	2.0 이하	0.12	"
	오염성	공기름	-	현저한 색·광택의 변화 및 부풀음이 없음.	현저한 색·광택의 변화 및 부풀음이 없음	"
		윤활유	-	현저한 색·광택의 변화 및 부풀음이 없음.	현저한 색·광택의 변화 및 부풀음이 없음	"
		95% 에탄올	-	현저한 색·광택의 변화 및 부풀음이 없음.	현저한 색·광택의 변화 및 부풀음이 없음	"
		시멘트 페이스트	-	현저한 색·광택의 변화 및 부풀음이 없음.	현저한 색·광택의 변화 및 부풀음이 없음	"
		10% 암모니아 수용액	-	현저한 색·광택의 변화 및 부풀음이 없음.	현저한 색·광택의 변화 및 부풀음이 없음	"
		우유	-	현저한 색·광택의 변화 및 부풀음이 없음.	현저한 색·광택의 변화 및 부풀음이 없음	"
		5% 아세트산	-	현저한 색·광택의 변화 및 부풀음이 없음.	현저한 색·광택의 변화 및 부풀음이 없음	"
		5% 염산	-	현저한 색·광택의 변화 및 부풀음이 없음.	현저한 색·광택의 변화 및 부풀음이 없음	"
		등유	-	현저한 색·광택의 변화 및 부풀음이 없음.	현저한 색·광택의 변화 및 부풀음이 없음	"
		간장	-	현저한 색·광택의 변화 및 부풀음이 없음.	현저한 색·광택의 변화 및 부풀음이 없음	"
	프탈레이트 함량	DEHP	%	상부,하부 : 0.01 미만	불검출(검출한계 0.005)	"
		BBP	%	상부,하부 : 0.01 미만	불검출(검출한계 0.005)	"
		DBP	%	상부,하부 : 0.01 미만	불검출(검출한계 0.005)	"
	DIN 51130	Slip resistance	난슬립	-	R10	-
	EN 13501-1	Reaction to fire	난연성	-	Bfl-S1	-
	EN 433	Residual Indentation(mm)	잔류압입량	mm	≤0.2mm	≤0.2mm
EN ISO 10140	Impact sound insulation	소음저감	dB	-	ΔLw = 20 dB	"

주요 특징점

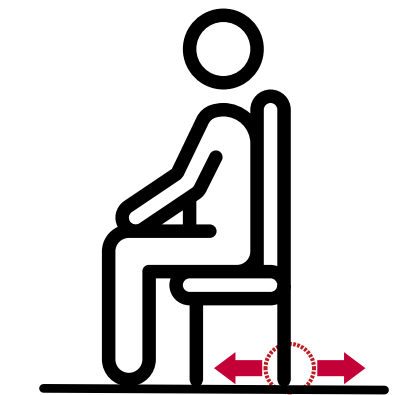
소음 감소

Impact Sound Insulation (EN ISO 10140)
Δ20dB



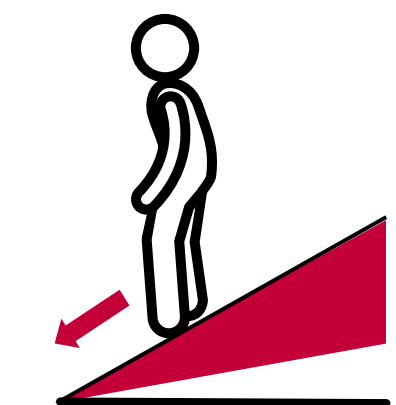
눌림방지

고내구 Film, 고탄성 쿠션층
 적용으로 눌림방지 우수
 잔류압입량 **≤0.2mm** (EN433)



미끄럼방지

유럽기준 R10 등급 확보
 Ramp Test **R10** (DIN51130)



난연성능

유럽기준 바닥재 최고등급 확보
 Reaction to Fire **Bfl-S1** (EN13501-1)



LX하우시스 'LG하우시스의 새로운 이름입니다.'

당신의 공간에 대한 더 큰 공감을 위해
LX Z:IN 인테리어로 새롭게 시작합니다.
LX하우시스로 새롭게 출발합니다.

◀ **컴포트** **COMFORT**

※ 온라인샘플북에 수록된 제품은 품질개선과 성능향상 등을 위해 사전 예고없이 변경될 수 있습니다.
※ 온라인샘플북의 이미지는 이해를 돕기 위해 연출된 것으로, 실제 제품과 다소 차이가 있을 수 있습니다.
※ 이미지의 색상과 디자인은 실제 제품을 확인하시기 바랍니다.
※ 고객 선택 또는 시공 환경 등에 따라 제품 구성과 규격이 달라질 수 있습니다.

www.lxhausys.co.kr

LX Z:IN 디지털 카탈로그

B2B 디지털 카탈로그

LX하우시스

Copyright © LX Hausys All rights reserved.